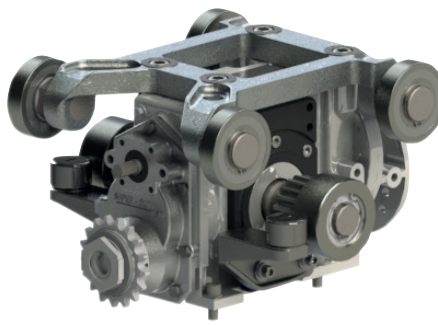
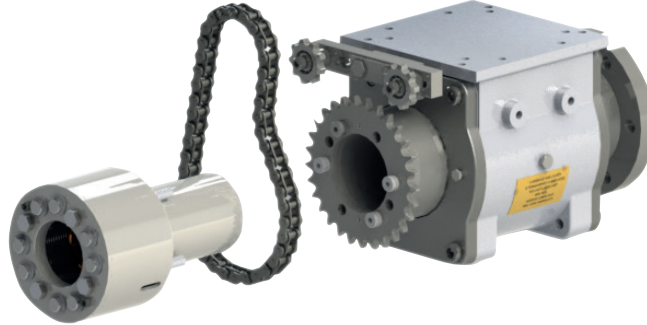


Balanced Gearbox



SEALPack™



Lower Housing
Spindle

INFINITY CARRIAGE

The Sootblower Carriage. Perfected

What is Infinity Carriage?

Clyde Bergemann's new Infinity Carriage leads the industry in its low-maintenance and extended life carriage design. The design, which is developed based on years of experience gained in the field and global customer feedback, addresses most challenges faced by sootblower maintenance and operational teams. Infinity Carriage comes with an unprecedented standard 5-year warranty and it works seamlessly with Clyde Bergemann's RS-series retractable sootblowers.

This proprietary modular platform consists of SEALPack™ with MAXPacking, Permalube lower spindle housing, and a balanced gearbox.

SEALPack™ with MAXPacking

SEALPack™ with MAXPacking is the most resilient sootblower packing in the industry. Developed originally for a heavy duty sootblower operated in an Integrated Gasification Combined Cycle (IGCC) Syngas Cooler. This heavy duty application demands that the sootblower packing is free from leaks and able to withstand 900 psig (62 bar) blowing pressure even after multiple operations in harsh environment.

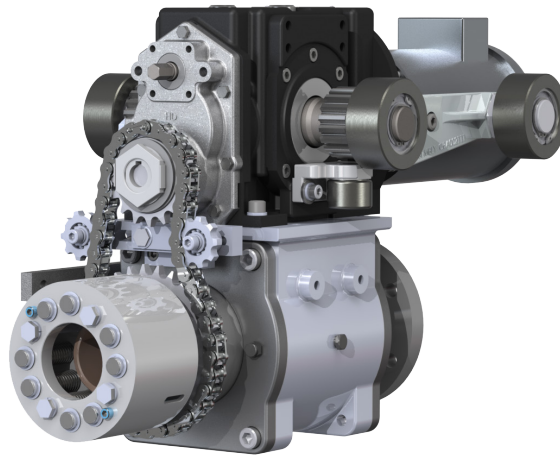
Permalube Lower Housing

Permalube lower housing is equipped with two sturdy spindle bearings permanently lubricated with proprietary high temperature lubricant. Since the bearings comes with life-time lubrication, the need for bearing re-lubrication is completely eliminated.

Balanced Gearbox

Balanced gearbox is separated from the lower spindle housing by four easily accessible bolts for fast gearbox replacement. This design eliminates the need to disconnect the feed and lance tubes when replacing the gearbox. It also reduces thermal transfer from the high temperature cleaning medium (steam) to the gearbox oil, bearings, and seals, hence, significantly extends the gearbox service life.





INFINITY CARRIAGE

Increase Reliability & Lower Maintenance Cost

Benefits

PART NUMBERS:

- Rapid Exchange Infinity Carriage: RCBA004511

To purchase the carriage modular components separately:

- SEALPack™ with MAXPacking: CBA001060-MP
- Lower Housing: CBA000477-A-Permalube
- Balanced Gearbox: CBA008001-C

- Eligible for rapid exchange program- discounted price in exchange for the return of the old/used carriage or carriage modular components
- Increase reliability and lower maintenance cost
- Eliminate laborious bearing lubrication and packing retensioning
- Longer carriage service life

For inquiries, call your local sales representative or
+1-800-241-5996



Clyde Bergemann Power Group Americas Inc.
Boiler Efficiency Product Division

4015 Presidential Parkway
Atlanta, GA 30340

1 800-241-5996
T: 770-557-3600
F: 770-557-3651

COMPANY WITH
QUALITY SYSTEM
CERTIFIED BY DNV GL
= ISO 9001 =

Internet: www.cbpg.com
eMail: info@us.cbpg.com