

Clyde Bergemann GmbH

The Clyde Bergemann GmbH is a globally-active company with innovative products and services related to energy-related production processes.

The company is a part of the Clyde Bergemann Power Group, a multinational group with subsidiaries and partner companies in more than 40 countries.

Within the group, Clyde Bergemann GmbH is responsible for the business field of "Boiler Efficiency", and therefore for the development and production of solutions for higher boiler efficiency and high-performance boiler cleaning. In addition, the products and systems contribute towards improved ash removal, reliable control and cleaning of flue gases and sustainable energy recovery.

For over 60 years, and with approximately 200 employees, Clyde Bergemann GmbH supplies customers across the world: from planning services via the development and production of harmonised hardware and software solutions, right up to installation and commissioning. Services provided over the entire product lifetime and regular customer trainings for round off the holistic service spectrum.



Have we sparked your interest?

In that case, we are looking forward to presenting the complete system to you through our Webinar.

Please request an appointment via Email to fabia.brinkmann@de.cbpg.com

Further information under www.cbpg.com

Clyde Bergemann GmbH

Schillwiese 20
D-46485 Wesel

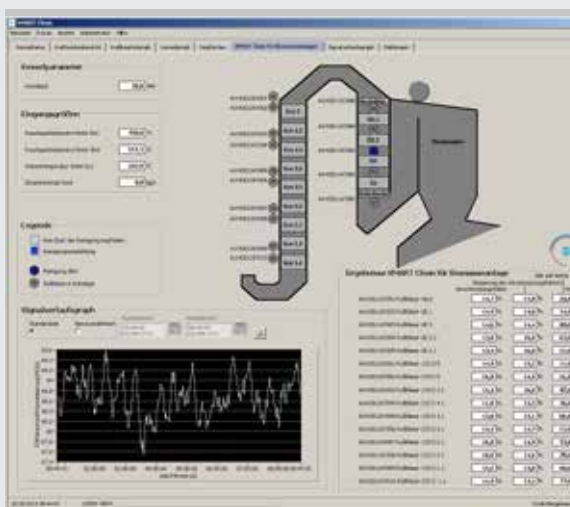
Phone: +49 281 815-0
Fax: +49 281 815-185

SMART Clean Compact

SMART Clean for Small Boilers
Newly Defined

**Webinar
Events**
Please contact us!





SMART Clean Compact, the Optimised “On-Load” Cleaning System for Steam Generators Under 250 MWel

SMART Clean Compact

SMART Clean Compact from Clyde Bergemann’s SMART Clean product family is the appropriate, cost-efficient solution for increasing the process efficiency of smaller waste and biomass-fired boilers as well as fossil-fired boilers.

SMART Clean Compact utilises model-based systems which analyse and assess the system process. Based on the results, cleaning devices such as the SMART Cannon, SMART SCS, sootblowers, rappers and explosion generators, are controlled to provide optimum boiler performance.

Principle of function

- Use of available process parameters (water, steam and exhaust gas measurements) to calculate and assess the benefits of the cleaning measures
- Division of the steam generators into targeted cleaning sequences for accurate process evaluation

- Continuous monitoring of the steam generator process
- Evaluation of the influences and effectivity of cleaning actions
- Optimisation of the cleaning strategy to achieve maximum efficiency for the steam generator

Features

- Determination of the optimum cleaning strategy for every cleaning system
- Determination of the optimum time interval between two cleaning processes
- Adaptation of the cleaning criteria to the real-time situation in the steam generator
- Cleaning based on the results of the fouling rate
- Targeted activation of individual cleaning devices

Benefits

- Simple, requirement-orientated cleaning of steam generators
- Higher efficiency through improved heat adsorption of the heating surfaces
- Reduction of the operating costs and avoidance of standstills
- Inexpensive – flexible installation into the existing system
- Reduction of fuel consumption
- Extension of boiler operation time or avoidance of uncontrolled outages